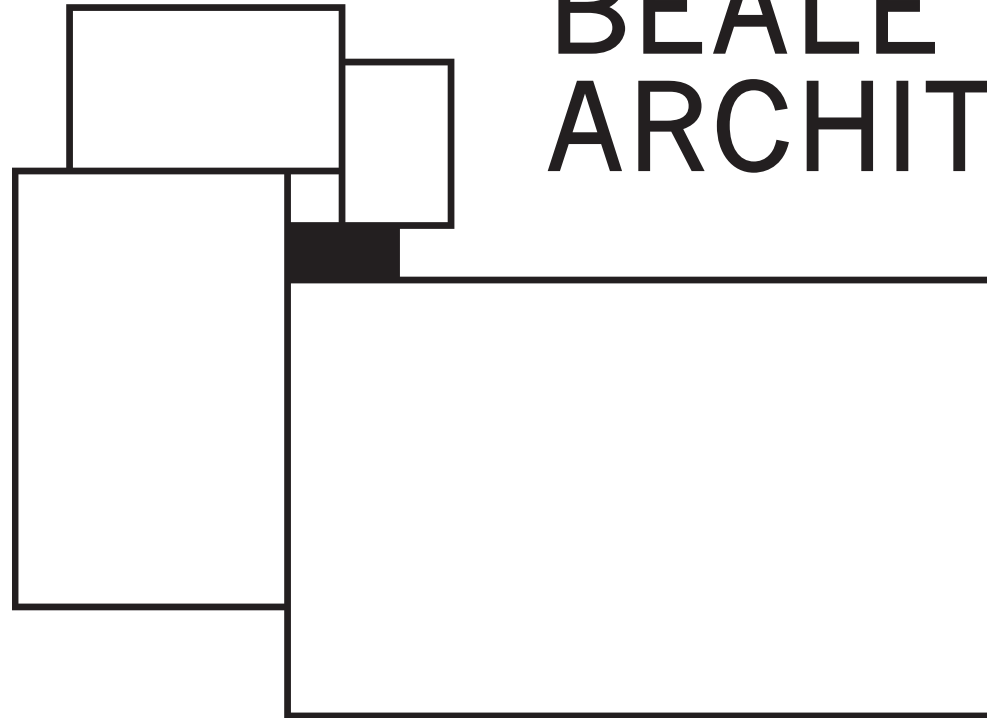


MARCUS BEALE ARCHITECTS



Education

Portfolio of Experience

How architecture helps education

From walking dialogues in a medieval cloister to information exchanges in knowledge hubs, education takes place in various places, sometimes virtually and over long distances...

Buildings can help or hinder.

Part of this is practical:

- Understanding what will be going on, educational and pastoral brief and objectives.
- Delivering well-planned projects on time and budget.
- Achieving good environmental conditions: daylight and acoustics, views to nature, clear organisation, easy way finding, inspiring moments across the campus, a range of different experiences.
- Adaptability
- Decarbonisation

Part intangible:

- What makes you want to go to school or university?
- What do you enjoy when you get there?
- What stories does the institution have to say about itself?
- What can the buildings and landscapes themselves teach us?
- What is the sense of place?
- How do these places seed experience and memories?

Architecture cannot avoid the second group of questions, because buildings and cities inevitably express the values of those who commission and create them. You can cover your eyes, but you cannot hide with a building. Buildings are ideas written in stone, which we walk past and inhabit every day.

The aim is to achieve environments where no matter who you are: student, teacher, researcher, explorer, whether you are having a good day or a bad day, the buildings are in some way your friend, inspire you, give you dignity, autonomy, safety and choice.

This is not always complicated. It can be as simple as finding the entrance, knowing by a glance what each part of the campus is for, planting trees. Yet it can be elaborated endlessly using all the techniques at an architect's disposal.

Schools and universities evolve continuously.
Architects are brought in from time to time.

Schools and universities, in charge of teachers, tend to all the positives and negatives this entails. A classroom or a library is needed, let's build it here, that project is finished. But a school is never finished, it is evolving. From time to time you need a reality check from an experienced outsider who is sensitive to your needs, to advise on the condition, sustainability and potential of built assets.

Below are examples of our education projects, from the 1990s to the present. These examples include libraries, classrooms, sports buildings, student accommodation. We are experienced in masterplanning, planned project maintenance, decarbonisation, and heritage.

Our approach is to clothe activities in buildings and designed landscapes that support them. We think laterally for successful built results, listen to clients and users, assemble appropriately skilled construction teams and lead them to deliver successful buildings with maximum professionalism and impact, minimum fuss.

What the projects have in common:

- Respect for the place and setting
- Easy way-finding and clear organisation of spaces
- Projects that reflect the institutional culture of the school or college
- User-friendly, ergonomic, accessible buildings
- Based on the human body and day to day life
- Sustainable, robust materials and detailing offering lifetime value
- Environmental and social sustainability.

Marcus Beale RIBA

Marcus Beale Architects - Education Projects - March 2024 p 3

Institution	Project name	Listing/designation	Type	Description	Date complete	Awards/notes
University College School	Sports Pavilion	MOL	Sports pavilion	11 new changing rooms, function rooms, pedestrian bridge, grounds building and water storage, and landscape design, straddling a public footpath.	2019	
Mansfield College	Master Plan	Grade II*	Master Plan	Conservation advice on Masterplan with design architects Fileden Fowles	Ongoing	
Mansfield College	Planned Proactive Maintenance	Grade II*	PPM	Surveys of the whole college and landscapes and preparation of Planned Proactive Maintenance including decarbonisation. Working with Skelly& Couch sustainability engineers	Ongoing	
Bedford School	Chapel Organ	Grade II*	Chapel	New organ in Bedford School Chapel	Ongoing	
Harrow School	Old Schools	Grade I	Museum	To provide a museum curation space and external and internal repairs.	2021	
Harrow School	Grove House	Grade II	Boarding House	New four storey extension to the existing boarding house, improvements to bedrooms, common areas, Assistant Housemaster and Housemaster accommodation, landscape alterations.	2021	
Harrow School	Druries House	Grade II	Boarding House	New four storey extension to the existing boarding house, improvements to bedrooms, common areas, Assistant Housemaster and Housemaster accommodation, landscape alterations.	2021	
Harrow School	Rackets court	Conservation Area	Sports - rackets court	Reordering a historic rackets court to provide a new court of the correct size and the highest technical specification and standard.	2021	
Harrow School	Chapel	Grade II	Chapel	Rebuilding of the west end gable.	2010	
Harrow School	Governing Body Meeting Room	Conservation Area	Meeting room	New panelled meeting room in what was formerly the school shop. New purpose made furniture.	2018	
New College Oxford	Feasibility plan for the college's medium term needs	Grade I, Schedule Monument, Grade II	Master Plan	Assessment of the college's history and significance, identifying potential projects and developing to concept stage.	2009	
New College Oxford	Morris Building, Kimber Wing	Grade II, setting of Scheduled monument	Student accommodation - accessible	2 new student suites suitable for paraplegics plus carer accommodation. Repair and reorganisation of three listed buildings to form a courtyard and cluster flats.	2019	Oxford Preservation Trust
New College Oxford	Gradel [New] Quad	Conservation Area, Grade II listed building	Heritage and townscape	Conservation architects for the scheme working with David Kohn Architects.	2019	
New College Oxford	Saville House	Conservation Area, setting of listed buildings	Student accommodation	Remodelling of west wing to suit new development.	2020	
New College School	Works to gym, playground, internal alterations	Conservation Area, setting of listed buildings	Gym, landscape, minor alterations	Alterations to New College School	2021	
Oriel College Oxford	Rhodes Building High Street Building	Grade II*	Student accommodation, seminar rooms, landscape	Additional floor within an 'origami' roof, extensive internal and external alterations.	2015	
Oriel College	Master Plan	Grade I, Grade II*, Grade II	Master Plan	Master plan for the college, 2007, refreshed in 2017, together with Conservation Management Plan.	2007 2017	
Oriel College	Pantin Library	Grade I	Library	Reordering, redecoration and relighting of the library, with new furniture fittings.		
Oriel College	Porters Lodge	Grade I	Lodge	Reordering the porters' lodge, 2003. New lion gates 2020.	2003 2020	
Oriel College	Chapel	Grade I	Chapel	Reordering, redecoration and relighting of the chapel, with new furniture and fittings.		
Oriel College	Provosts Lodgings	Grade I	Conservation/alterations	Alterations including new label moulded doorway, window and cat flap, and a bowstring truss to support 17th century bresummer.	2004	
King's College School, London	Sports Pavilion	MOL	Sports pavilion	Changing rooms, function room and viewing terrace at the centre of the school's fields.	2011	
Clifton College, Bristol	School House and new Watsons	Grade II	Boarding Houses	A new building attached to an existing listed boarding house to provide two boarding houses on the site of one, in the centre of the school.	2004	Bristol Civic Society Environmental Award
St Peter's College Oxford	St George's Gate	Scheduled Monument [setting]	Student accommodation	New student accommodation on a canal side site next to the castle wall forming a courtyard.	1995	Brick Design Awards Oxford Preservation Trust
Cumnor House School, Sussex	Classrooms	AONB	Classrooms	Six new build classrooms in an Area of Outstanding Natural Beauty.	2006	
Cumnor House School, Sussex	Master Plan	AONB	Master Plan	Analysis and master plan of the site to support proposals to rationalise the school campus.	2007	
Cumnor House School, Sussex	Theatre	AONB	Theatre	New school theatre in an Area of Outstanding Natural Beauty	2008	Sussex Heritage Trust
Wimbledon College of Art	Foyer	-	Entrance foyer	New foyer and entrance to the college.	2006	
Wimbledon College of Art	Theatre and studios	-	Theatre, studios	Retrofitting theatre for theatre in the round, introducing natural light and ventilation. New mezzanine and gables, wheelchair access to the lighting and control room. New lift, studios, and art storage facilities.	2008	
School of Pharmacy UCL	Library	-	Library	Reordering and refitting the school's library including new furniture and environmental alterations.	2010	
School of Pharmacy UCL	IT suite	-	IT suite	Reordering and re-fitting the IT suite.	2011	
Royal Holloway College	Founders Statue	Grade I, Grade II*	Statue	New railings and lighting to the founders statue.	2014	
Oxford Brookes University	One Campus Feasibility Masterplan	Various	Master Plan	Coordinating architect for the masterplan working with other firms.	2020	
St Catharine's College Cambridge	New Hall	Grade I		Conservation advice on Hall project with design architects Gort Scott		
St Hilda's College Oxford	Heart of College	Grade II	Master Plan	Conservation advice on Masterplan with design architects Gort Scott	2021	
Rhodes House	Reordering	Grade II*		Conservation advice on major reordering with design architects Stanton Williams	2023	

University College School

















Oriel College Oxford

Porters Lodge

High Street Building

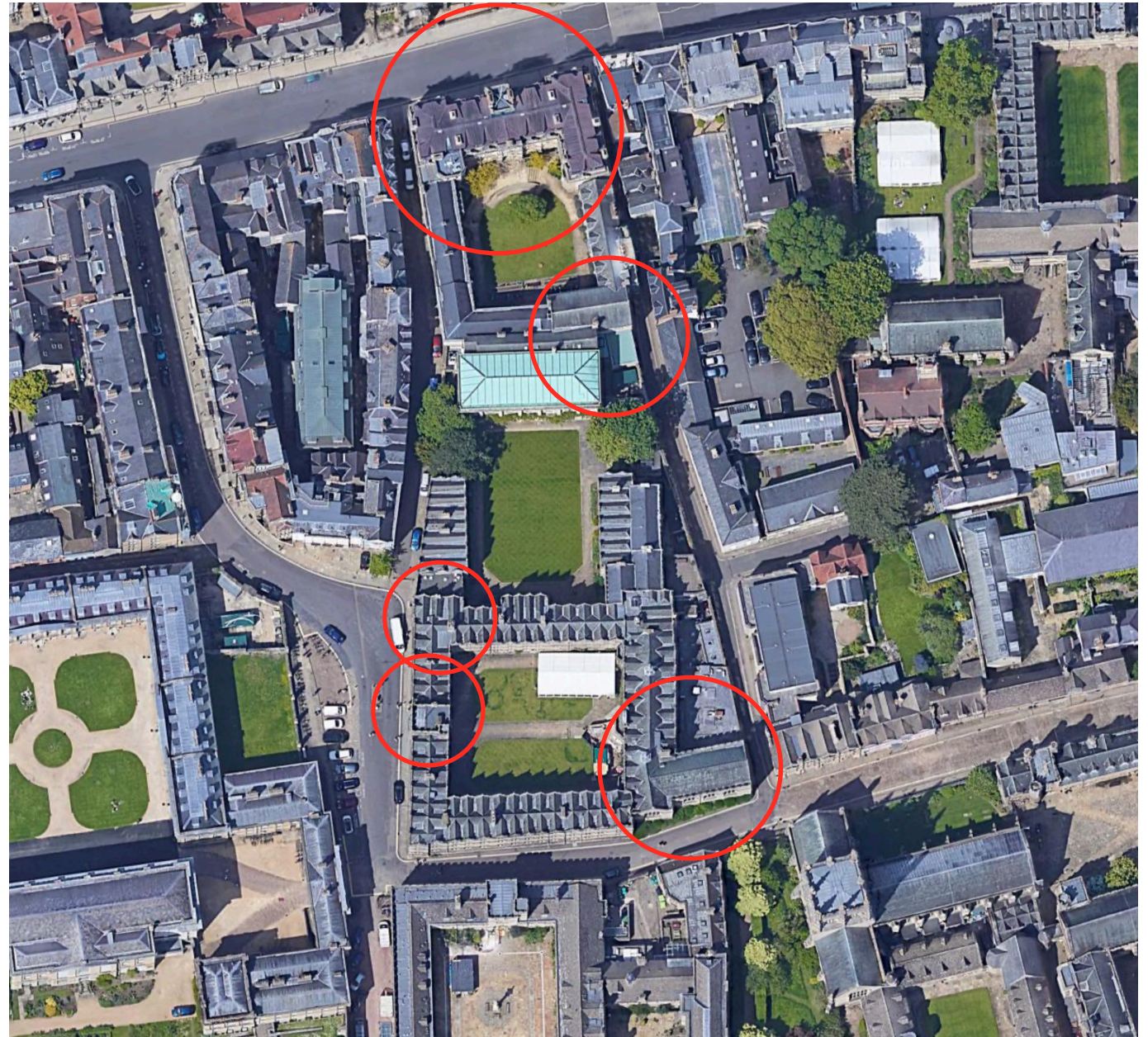
Pantin Library

Chapel

Provosts Lodgings

Conservation Management Plan

Master Plan









MEMORIAL WALL

BRIAN KA
DENNIS EDWA
PETER JOHN
DESMOND WALE
HERBERT BRYAN
ROBERT BRYAN
RONALD GEOFF
ALISTER CHARLE
JOHN WILFRED
WILLIAM BARBOUR
RICHARD FREDERIC
MICHAEL BRECH
THEODORE JOHN
JOHN WILFRED
PETER TAVERN
ARTHUR PETER
MICHAEL H CHAI
PHILIP GOUGH
RICHARD KEN
RICHARD SANDOZ
ANTHONY HUTT
ALEXANDER SCOT
ALAN WILLIAM
JOHN MACLAREN
JOHN DE MONTJ
JAMES PHILIP
ROBERT PHILIP
ARTHUR JAMES
ANTHONY HUISSO
ANTHONY WESEY
GEORGE ANTHONY
MICHAEL ANTHONY
EDWARD
DOUGLAS W
ARTHUR NATHAN
ROBERT
NATHAN
JOHN W
EDWARD GROMPT
WILLIAM MICHAEL



















New College Oxford







New College Oxford















Harrow School

Grove House

Security Centre

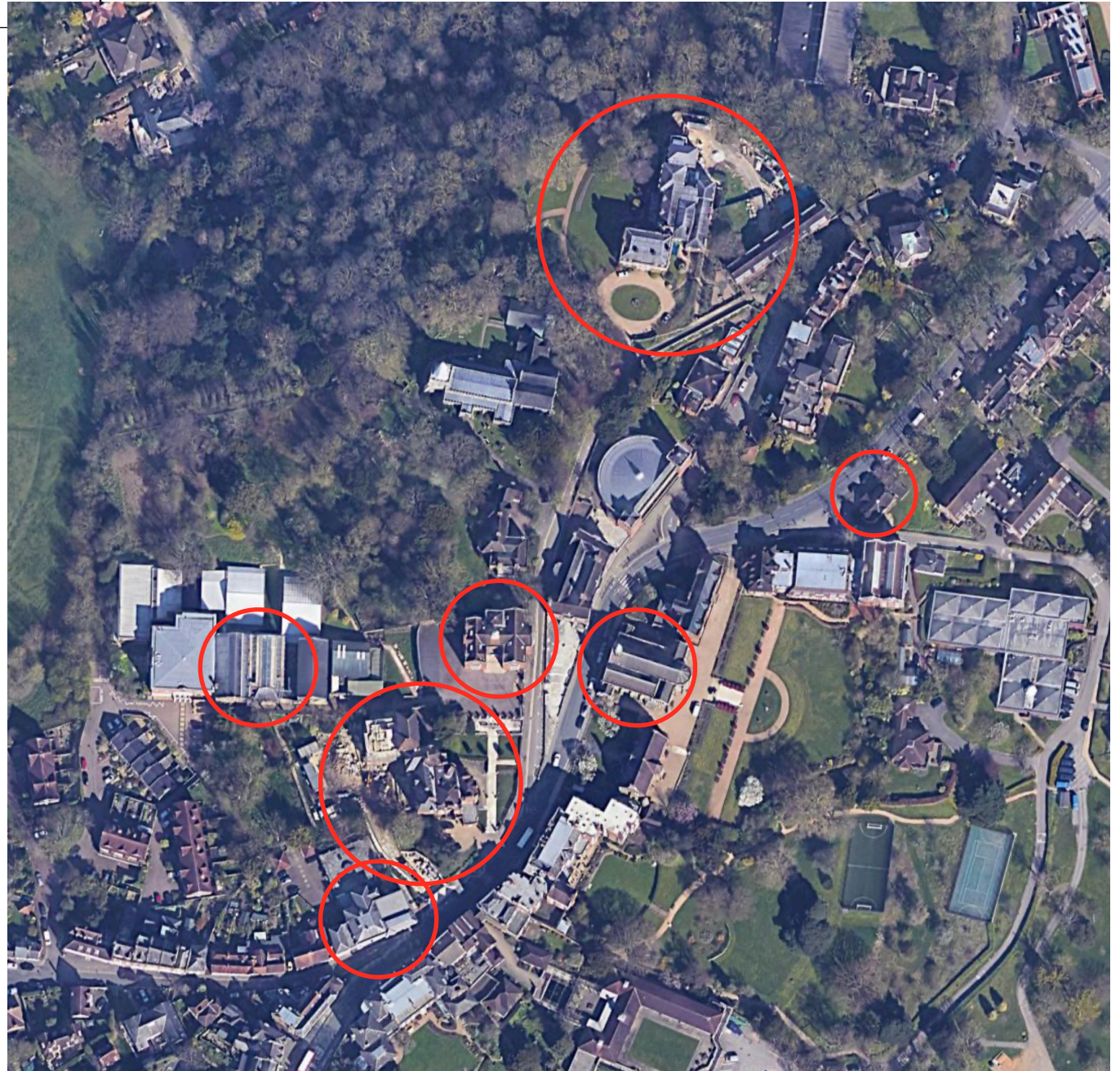
Old Schools

Chapel

Rackets Court

Druries

Governing Body Meeting Room



Druries House, Harrow, West elevation

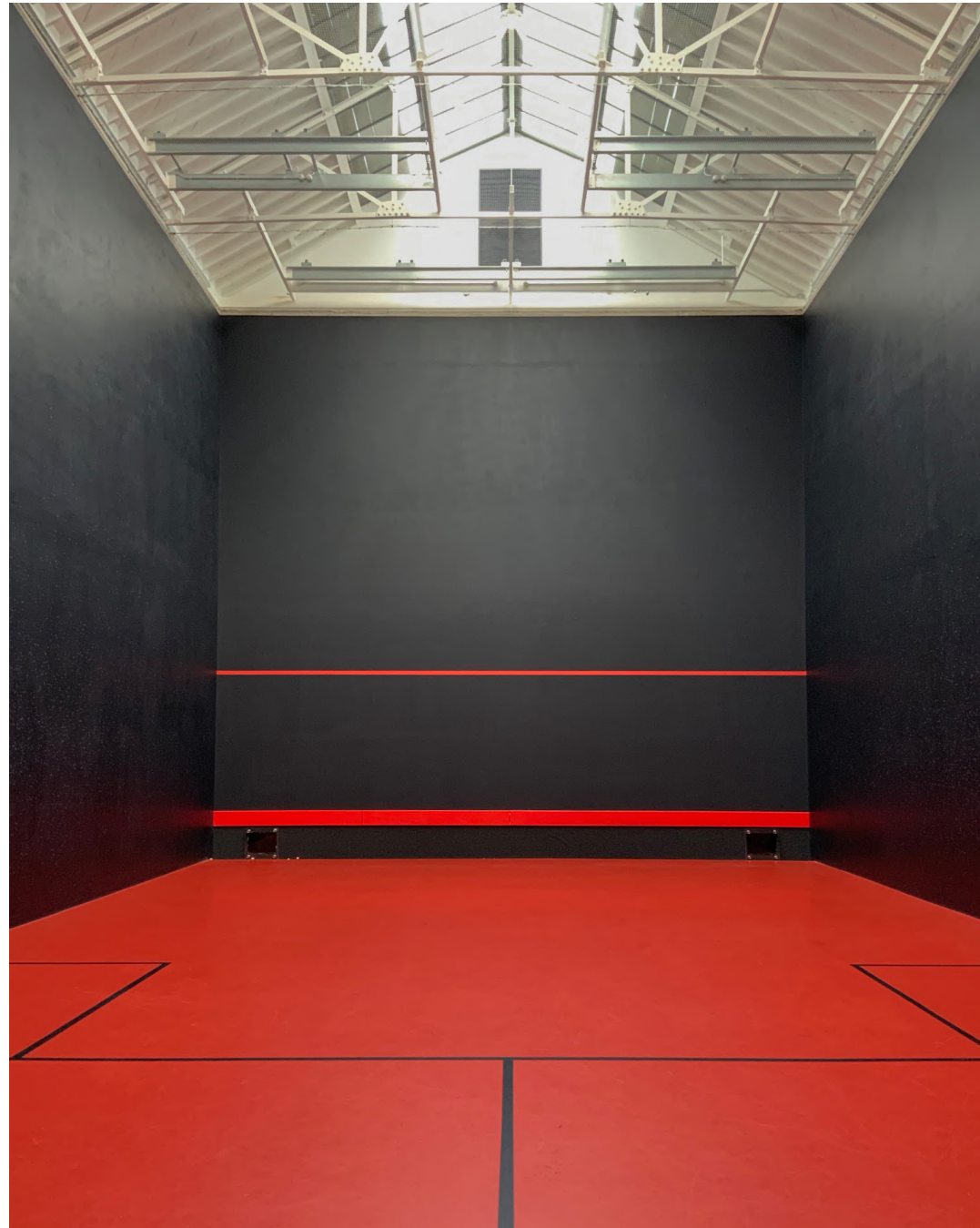


The Grove

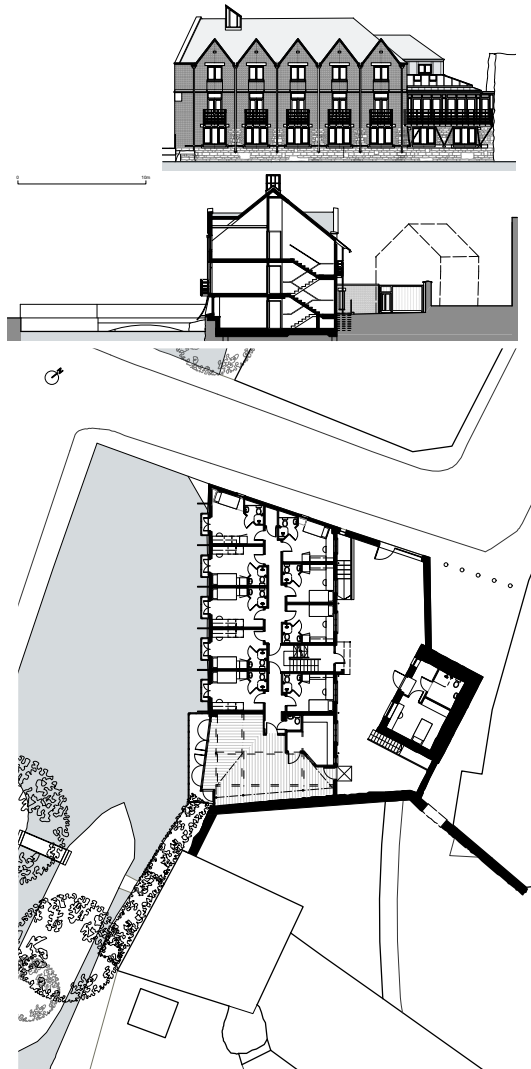




Harrow Rackets Court

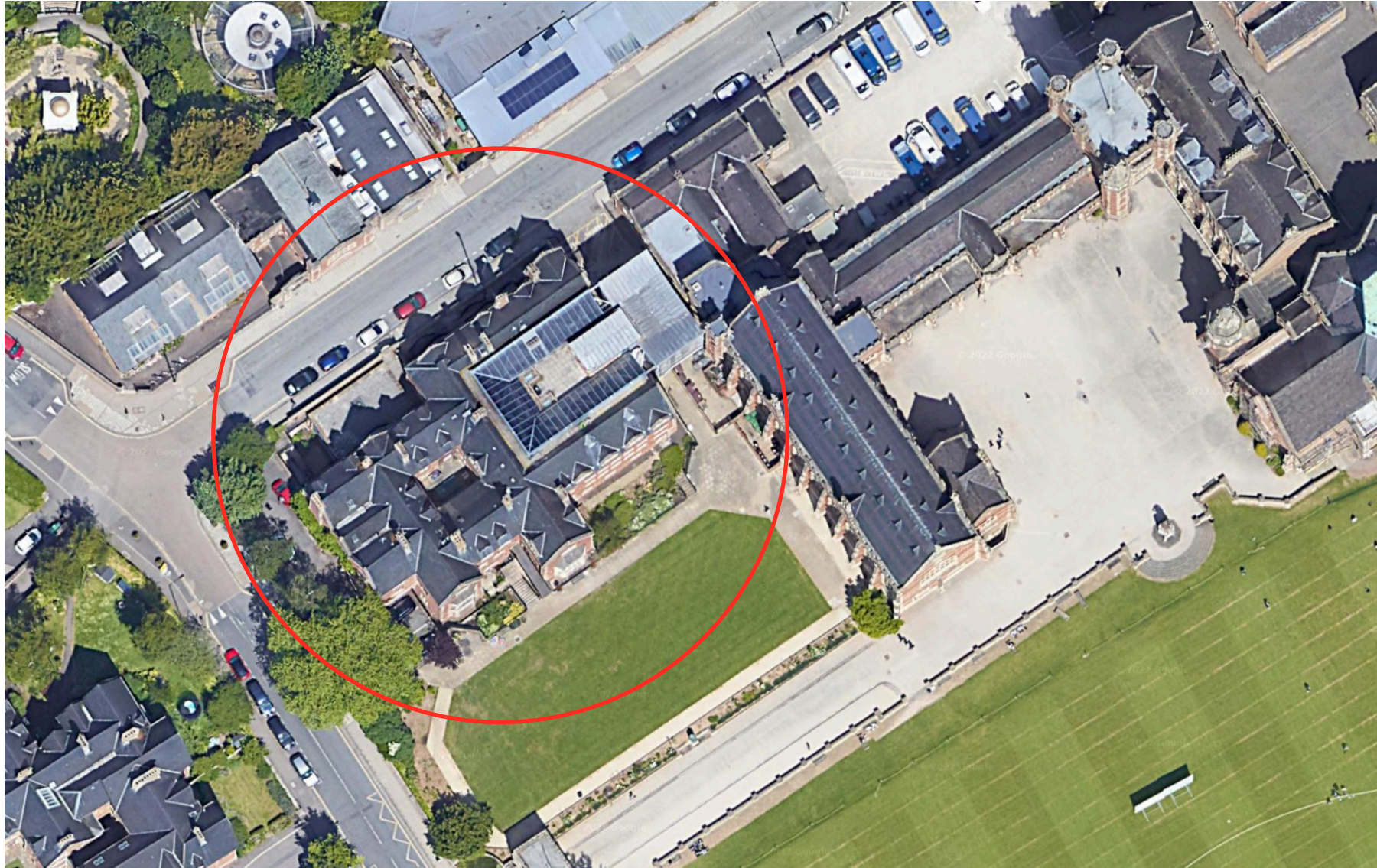


St Peter's College Oxford





Clifton College, Bristol









Old versus new.

Solid stone

New quick-assembly, timber clad, highly energy-efficient accommodation. A clear distinction which respects the older building.

Bottom centre you can see the new trench around the basement of the original listed building to make these rooms light and dry.

The view from the road through the new development at ground level leads to the playing fields, and can be seen on the previous page. The undercroft is playable.



Wimbledon College of Art





School of Pharmacy UCL



Cumnor House School, Sussex



