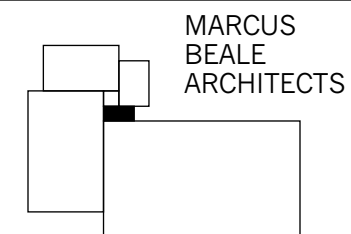


Rev A - 15.02.05: Lighting revised
PLANNING 18 Feb 2005

MBA, 6th Floor, Tuition House
27-37 St. George's Road
Wimbledon, London SW19 4EU

Phone +44 (0) 20 8946 4141
Fax +44 (0) 20 8946 2299
Email mba@marcus-beale.co.uk

www.marcus-beale.co.uk



WIMBLEDON SCHOOL OF ART FOYER
Long Section- PROPOSED LIGHTING

1:200 at A3

05.01.05

335/023A