

More Green

Intensify the **green-ness** - part of our global brand
hedging and verges at roadsides
Living wall to greet you when you go out of the station
all new office buildings to have planted, **inhabited roof gardens with trees**
The hanging gardens of Wimbledon

Literally: Pedestrian routes -

Linking the village and the town with meanders up Wimbedon Hill

Capacity to move around the town.

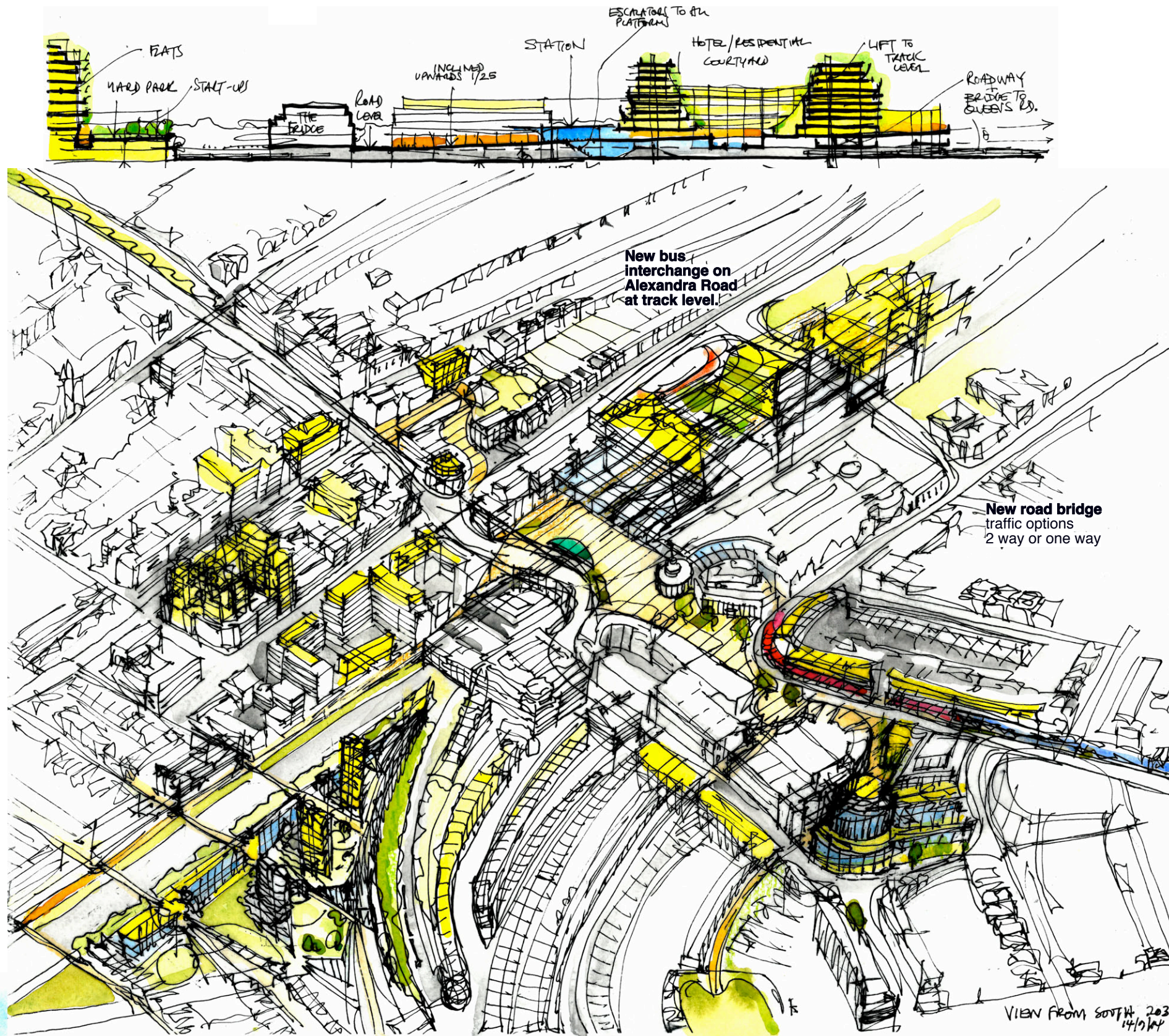
More tall Buildings

Consider the views from the street, **step back at various 'tide levels'** with **planted terraces - the hanging gardens** (it's Wimbledon after all).
Break up the form at high level to let the light through

Offices: Broadway 8-10 storeys
Central to the station: in tall buildings zones away from residential, up to 12-14 storeys?
Higher than this?

New foot bridges over the railway

link to the roads leading up the Hill towards the Common



More movement, of various kinds, more cycle and foot

Permeability
pedestrian
green spaces
cycle routes
roads
buses
trains
trams
tubes,

a more integrated transport system

more choice, more capacity, more robustness in the system,

- a web of **green routes**, pedestrian routes, using existing footpaths, places for people away from noise

More usable space

an extra 1-3 million ft2 of good quality naturally lit office space, near to the station
double the amount of residential, mostly flats in the centre.

Existing stock: up not out.

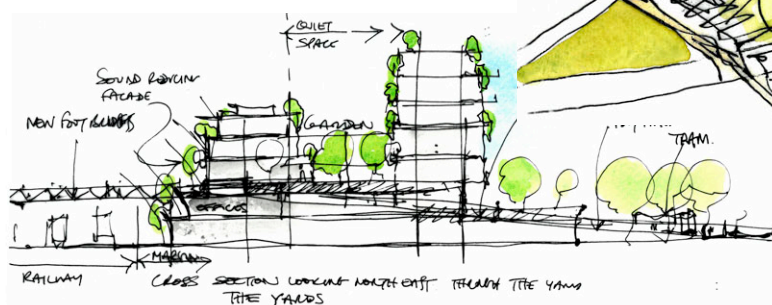
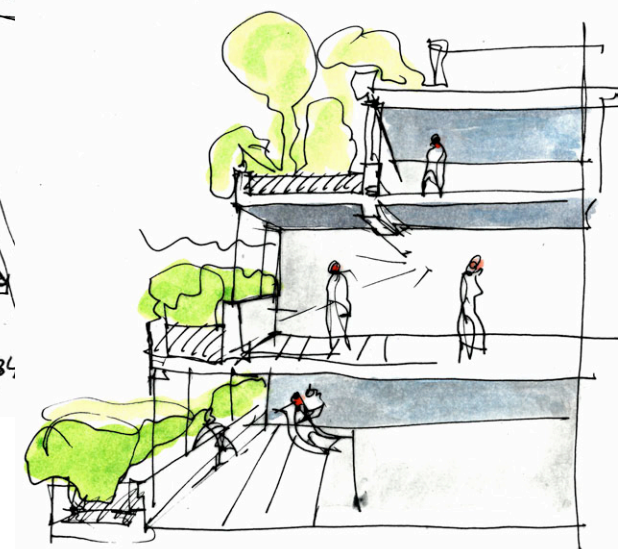
No harm in a building going up from 2 to 3 storeys, unless the road is too narrow to cope. Most of Merton could have an extra storey without building over a single blade of grass. Let the market provide this 30% increase in residential accommodation space. What the city gets bak are insulated modern roofs with rainwater attenuation built in... How wide is the road?

More pressure on Civic and community space.

Parks, libraries, open spaces, community halls, etc.will be under increasing demand, push resources generated by the extra intensification into maintaining civic places in top condition

More new Buildings

What kind:
decent ceiling heights, **naturally lit**, green roofs, **step backs and terraces**
Buildings that can be used if the electricity supply is switched off. Climate adaptive.



How tall?
use the topography grade down to residential

The Sainsbury's/ Elys block could go higher so could the bridge over the station

