

Wormholes

Build/adapt a grid of 'worm holes' over entire area south of Mansel/Woodside enhance pedestrian/cycle use and safety,
Build **Elevated Paths**, following High Line (NYC) and Garden Bridge, allowing plants on the footpaths
Separate from vehicular traffic, and allow easier traffic flow through the commercial area (Ken High Street as model)
20's Plenty Campaign 20 mph on Wimbledon Bridge and the Broadway will make roads, pavements and cycle routes safer and more welcoming to all



St Mark's Green Box

A dedicated space in St Mark's Place where people/families/schools can come and learn more about how to live sustainably
Grow Up Box (Abundance Wimbledon idea)
Recycling advice; mini-recycling spot (trailer)
Up-cycling shop, workshops, drop off spot
Staffed by locals and working with YMCA



'The Greens', using astro-turf, real lawn or gravel (eg: Luxembourg Gardens) to provide 'resting places': places to sit and eat a sandwich, a chance to connect away from traffic, close enough to talk. AELTC might advise on lawn management. Sculpture/arts trail, inviting tourists/visitors/workers to discover and enjoy different parts of the area
Commuters/visitors welcomed to Wimbledon by passing through a series of Greens:

Station Green

Market Green outside Morrison's, w/Pop-ups

Womble Green alongside Polka Theatre (Wombles = an untapped Goldmine)

My Y Green, on YMCA land

Theatre Green build out on Russell Road/P4

Link to S Park Gardens and Haydons Park etc.
Reinstate **green verges**, fed by stored rainwater



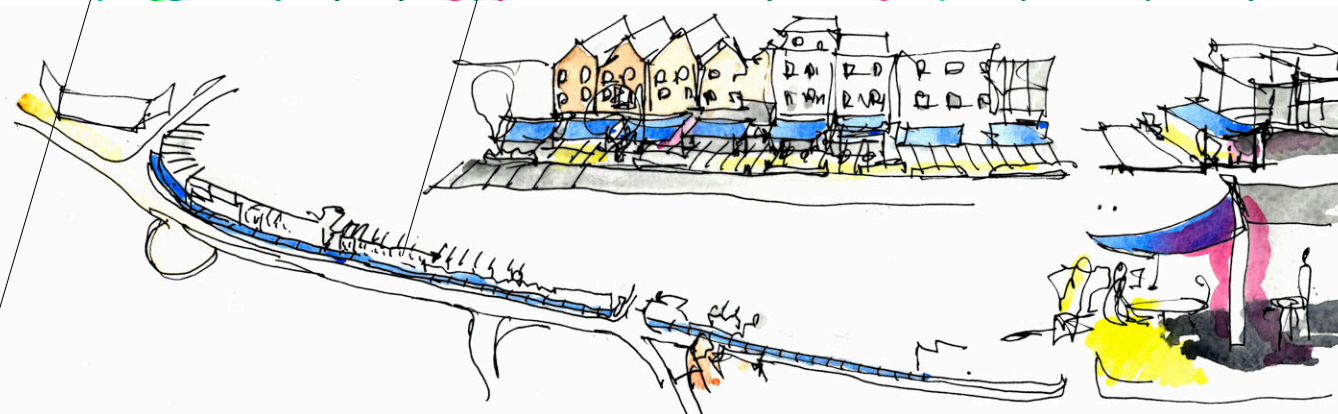
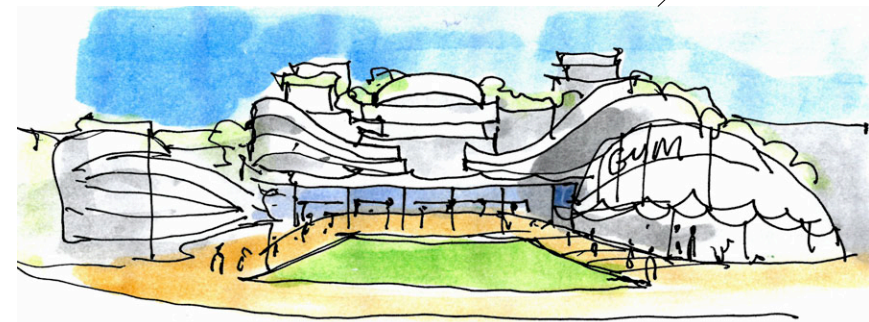
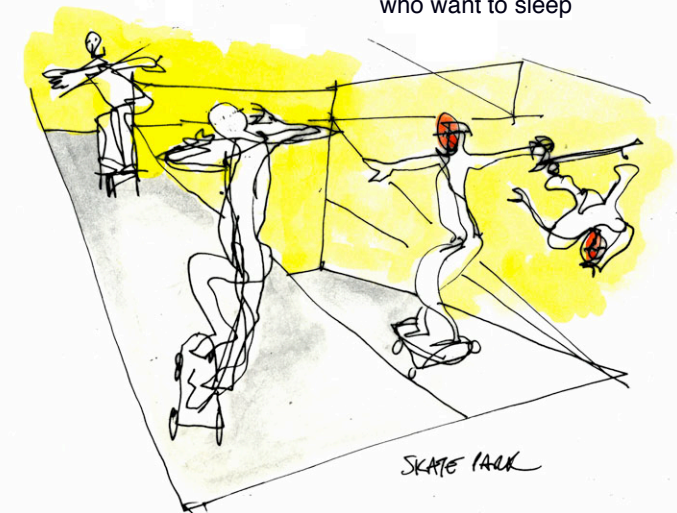
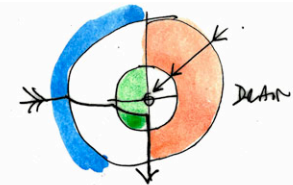
Theatre Green/Regeneration

Develop P4 site into student/singles housing, continuing design of façade of existing theatre
A low energy building, heavily insulated, PV hot water and rainwater used for trees and toilets
Retain car park on ground; parade of mini (weekly/monthly rental) 'pop up' shops along Broadway (eg: fruit/veg market, antiques/jumble, Chelsea Fringe, X-mas market, etc)

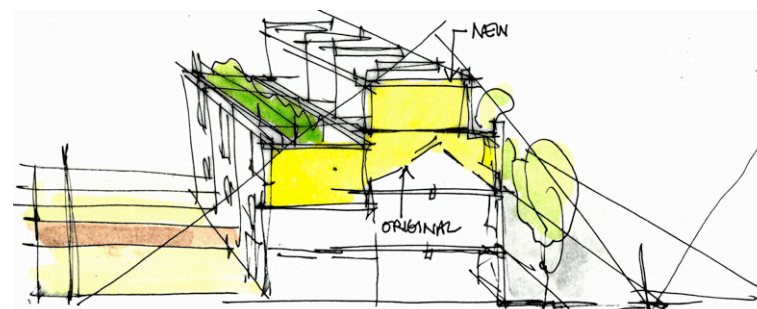


Welcoming younger people

Amend Licensing Strategy, specifically for this area, using the Drain Principle: Late night venues must be located within 150-200 metres of the Station, so that visitors can come and go without disturbing others who want to sleep



'The Awnings' - A long run of existing terrific and diverse small restaurants, lunch spots, coffee shops that are located down the narrow end of the Broadway. Restaurants to be encouraged to locate down the Broadway, in The Awnings (already dozens are operating there....), open until 11 weekdays and midnight on Friday/Saturday nights
To entice more/new customers to these venues, make this area its own Foodie-haven, cover the row on the East Side with Awnings and installing a green hedge down the side of the pavement (replacing the dead trees) 'cloud formations' on the awnings, that change with the seasons

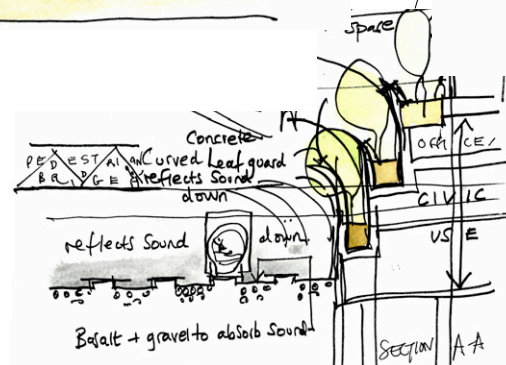


Build up and green.

Old/Victorian buildings on Broadway need blanket permission to build simple mansard-like roof extensions, adding capacity above
Older buildings need advice and encouragement on insulation, rainwater collection/use and energy efficiency
Use rainwater harvesting to maintain our green spaces
Smarter energy use on new and existing commercial sites
Insulate older buildings
Solar panels and rainwater collection on rooftops

The Station Green

Build multi-use 8 level building over Station
Four storey, four star capsule hotel
Penthouse restaurant w/spectacular views
Bar/Coffee Bar on first floor; fitness centre above listed shopping parade to right
Enhanced "Green grass" Forecourt, with Visitor Centre



Live/Work/Play at the Yards

We would like to see a community approach like the Olympic Park, designed for inhabitants to live, work and play. We do not see a river of high rise buildings
Site for our Tech Green/Base Camp for start-ups?